



BECKSON MANUFACTURING, INC.



Quality Accessories

Dependable Products



Beckson Manufacturing, Inc.



Ventilation

C-6 Vent-O-Mate®

The C-6 Vent-O-Mate is designed on the same principle as the wing of an aircraft. The shape of the cover creates a vacuum on the top of the vent. As the vacuum removes air, fresh air is drawn in through an alternate opening to replace the hot or stale air. The ventilator works independently of the direction of the wind, while, optimum conditions have the wind flowing directly over the top.

Unique Design for Unique Applications

Because of its unique design, the C-6 ventilator has considerably less flow resistance than conventional ventilators. Unlike a conventional pipe opening, the Vent-O-Mate shelters the inside from the outside elements while still allowing 70% of the air to pass through. What is great about the Vent-O-Mate is that it continues to work even while you are not there. It will help reduce the hot stuffy cabins, storage areas, boats, trailers and some roofing applications. This ventilator also reduces moisture problems that may result in the growth of mold and cause allergies.

Flow Rates

With a wind force of roughly 2 to 7 mph, the rate of exchange is about 350 CFH. This rate of exchange is ample for a recreational vehicle, shelter, trailer or boat. Fresh air may be supplied through a 3 inch diameter hole sited in a place protected from the wind. (A clam shell vent like Beckson's C-7 or C-8 vent would suffice.) Air must be able to circulate freely from the inlet to the ventilator. For this purpose, an opening of roughly 9 square inches must be provided at all intervening doors or bulkheads. As the wind speed increases, so does the flow of the ventilator. Turning the knob on the post mounted in the center of the ventilator and pulling down to partially close will regulate the amount of air flow.

Cover Options: Plastic: Black/White or Stainless Steel

C-6	Passive Air Flow	White
C-6B	Passive Air Flow	Black
C-6SS	Passive Air Flow	Stainless Steel
MC-7	12 Volt Motor	White Only
MC-7SS	12 Volt Motor	Stainless Steel
Hole Cut: 4"	O.D.: 7.9"	Height 2.3"

Contact Beckson for Additional Info. on MC-7 models.
CAD drawings available on request.



Beckson Manufacturing, Inc. 165 Holland Avenue, Bridgeport, CT 06605 USA
web: www.becksonmfg.com E-mail: info@becksonmfg.com

Tel: 203-366-3644 or Fax: 203-384-2484



Beckson Manufacturing, Inc.



Ventilation

Molded Clam Shell - Multi-Directional

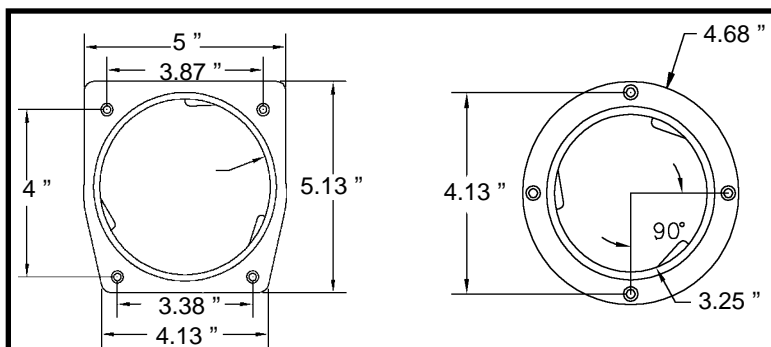
These hard clam shell vents C-7 (3") & C-8 (4") snap onto to a base which allows the vent to be turned to its desired position, or to redirect discharge away from an area. The included vent base also contains a handy flange for attaching vent hose if needed. Also sold separately below. 4" screened version also available (CS8). Standard colors are white and black. Add suffix "B" to part number for black.

Item	Height	Length	Depth	Hose Size
C-7:	2.5"	5.5"	6.0"	3.0"
C-8:	2.5"	5.5"	6.0"	4.0"
CS8	2.5"	5.5"	6.0"	4.0"

SA-3 & SA-4 Vent Hose Adapters:

These handy vent hose adapters not only provide the base for the C-7 & C-8 vents, but also provide a means to attach a ventilation hose to complete an application. Standard color is black.

Item	Height	Length	Width	Hole Diameter
SA-3	1.30"	N/A	4.68"	3.25"
SA-4	1.30"	5.13"	5.00"	4.00"



Vent Hose Adapters & Hose

These handy sleeves with a rolled end for drop-in provide extra area to attach a hose.

Item:	Diameter	Length
A-3	3.0"	3.0"
A-4	4.0"	3.0"

Vent Hose

VT-3 & VT-4 vent hose is wire reinforced and ideal for many vent applications. Standard colors are black & white. Standard pack is 50 ft coil.

VT-3	Diameter:	3.0"
VT-4	Diameter:	4.0"

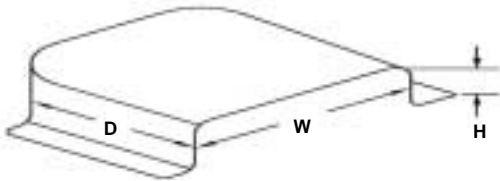


Ventilation

Thermo-formed Clam Shell Vents:

These handy vents provide closure over many openings. Made of a rugged UV stabilized white material, Beckson's vents are intended to last for years. See chart for dimensional details. Standard color is white. ABS material may be painted with acrylic paint.

Item:	Height	Width	Depth
C-1	3.00"	6.25"	7.00"
C-2	2.62"	8.00"	5.50"
C-3	1.25"	7.37"	2.50"
C-4	1.50 "	5.50"	7.00"
C-4A	1.25"	4.00"	4.50"
C-5	3.43"	8.13"	10.80"
C-9	1.00"	9.00"	2.50"



**7 Models
To Choose
From**

**Removable
Vent
With
Replacement
Cover**

High & Low Profile Access Vents

Add extra ventilation with this adaptable access plate. The vent may be removed and a standard smooth center plate may be installed to keep the ventilation area water tight when not in use. Each unit includes both a vent center and a standard smooth center. Available in high and low profiles and screw-out or pry-out models.

AP-HP-6 Height::	3.00"	O.D.: 8.125"	I.D.: 6.50"
AP-LP-6 Height:	1.75"	O.D.: 8.125"	I.D.: 6.50"

